

LOCAL NOTICE TO MARINERS No 46 of 2016

SHRAPE WATERSPORTS AREA

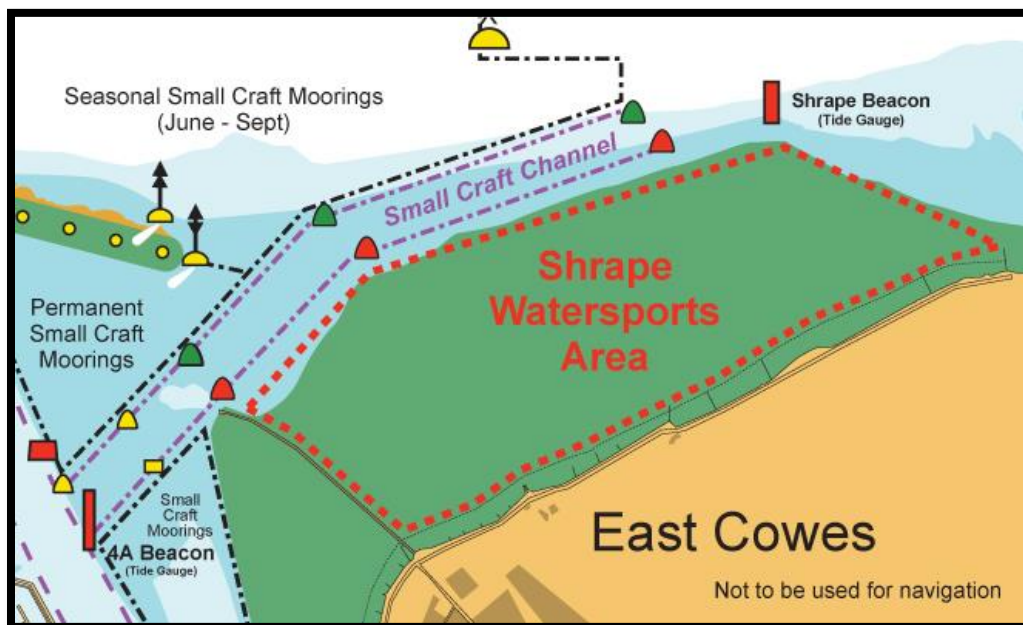
(This notice supersedes LNTM 04 of 2015 which is hereby cancelled)

Cowes Harbour Commission introduced a Shrape Watersports Area within the Inner Harbour in 2015, (see General Directions 2.32 and 3.4).

Within the Shrape Watersports Area the following activities are permitted to exceed the 6 knot speed limit if safe to do so:

- i. Dinghy and Day Boat Sailing
- ii. Wind Surfing
- iii. Kite Surfing
- iv. Rowing
- v. Support and rescue craft involved in the above activities.

The Shrape Watersports Area is not to be used for activities involving the towing of persons; such activities are prohibited within the Inner Harbour and Outer Fairway (see General Direction 4.4.1).



Vessels not involved in the above activities are advised not to enter the Shrape Watersports area and to keep to the Small Craft Channel.

Capt. S. McIntosh

Harbour Master, Harbour Office, Town Quay, Cowes, Isle of Wight, PO31 7AS

Email: chc@cowes.co.uk

Website: www.cowesharbourcommission.co.uk

22nd July 2016